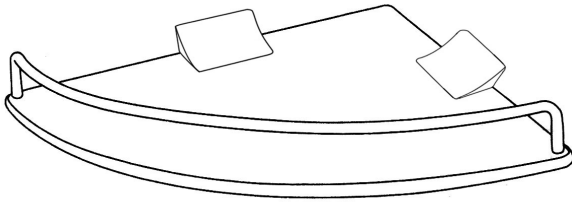


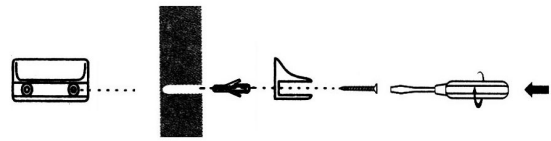
**2005 001 01**

Single Corner Glass Shelf  
INSTALLATION GUIDE

DOWELL

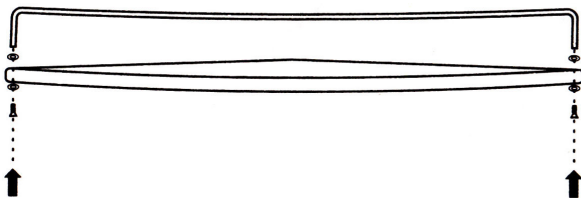


A



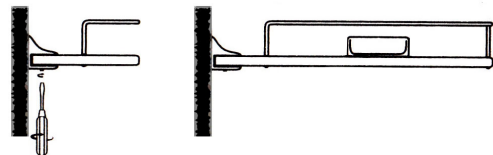
B

Fix the base onto the installation position by explosive bolts according to the real dimensions of the product. (See Fig.A and Fig.B, in which the numbers of ①, ② and ③ indicate the sequence of installation.)



C

Fix screw on the glass with stainless strip, like picture C



D

Afer confirming products fastness, put glass into glass clamp and screw, then finish installation